

## Instructions for using the PM test:

- 1) Remove the milk sample into a tube (part of the PM test).
- 2) Apply the milk sample on the surface of the selective chromogenic agar.
- 3) Incubation PM test is 22 to 24 hours at a temperature of 37.5°C.
- 4) Qualitative and quantitative determination of species of origin mastitis.

## Package:

Tube, sterile loop, disinfectant napkin, three sector Petri dish Ø 90 mm, containing 3 different chromogenic soils: The sector „Stap“ for the detection of staphylococci. The sector „Strep“ for the detection of streptococci. Sector „G-“For the detection of gram-negative bacteria (G-sector is possible the detection of yeasts and molds).

## Advantages of the PM test:

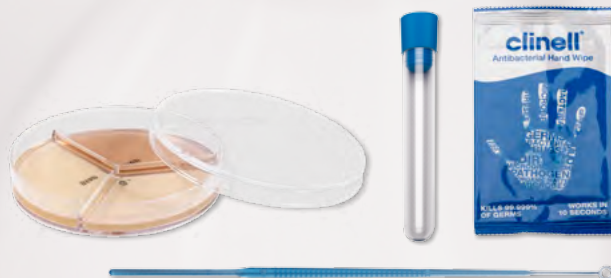
- Commercially available, rapid and inexpensive.
- Diagnosis of species of origin of mastitis on the farm
- A simple reading of results based on different colors grown colonies.
- Rapid screening of cows producing milk or contagious environmental pathogens within programmes against mastoiditis.

## Expert advice:

MVDr. Miroslav Věříš  
+420 603 218 079  
m.veris@tiscali.cz

## PM test enables:

- Determining the species of origin of mastitis.
- Minimizing the consumption of antibiotics.
- Targeted use of antibiotics with indicator restrictions.
- Work efficiency and realizing cost savings on programme against mastoiditis and differentiated drying off cows.



Manufacturer culture media  
and blood derivatives

LabMediaServis Ltd.  
Národní 84  
551 01 Jaroměř

+420 491 810 091  
info@labmediaservis.cz

[www.labmediaservis.cz](http://www.labmediaservis.cz)



# PM test

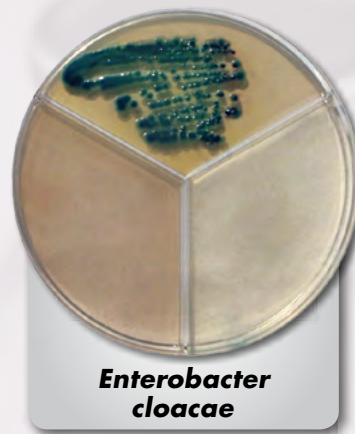
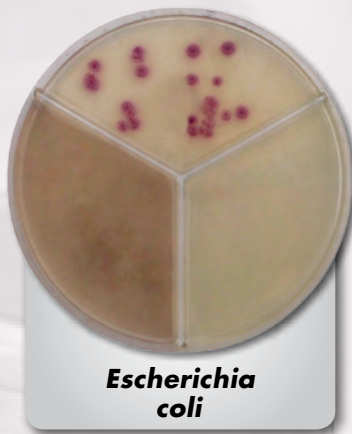
Culture set to determine the type  
of originator of mastitis

Diagnosis directly  
on the farm

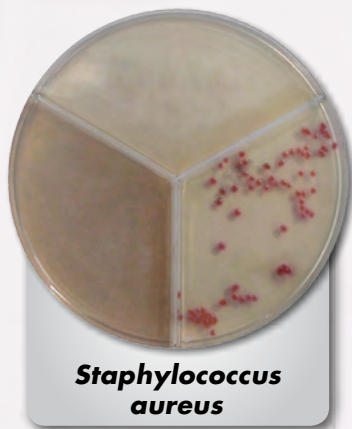
Pure Milk test



## Examples of bacterial colonies on the G- selective areas



## Examples of bacterial colonies on STAP sector



## Examples of bacterial colonies on STREP sector



Colors of individual bacteria may differ in a shade.  
Every farm has individual species spectrum.

### We recommend that in the framework of expertise:

- Determine the spectrum of pathogens of the mammary gland on the farm.
- Build strategy of the programme against mastoiditis.
- Ensuring control of the identified pathogens on MALDI-TOF.